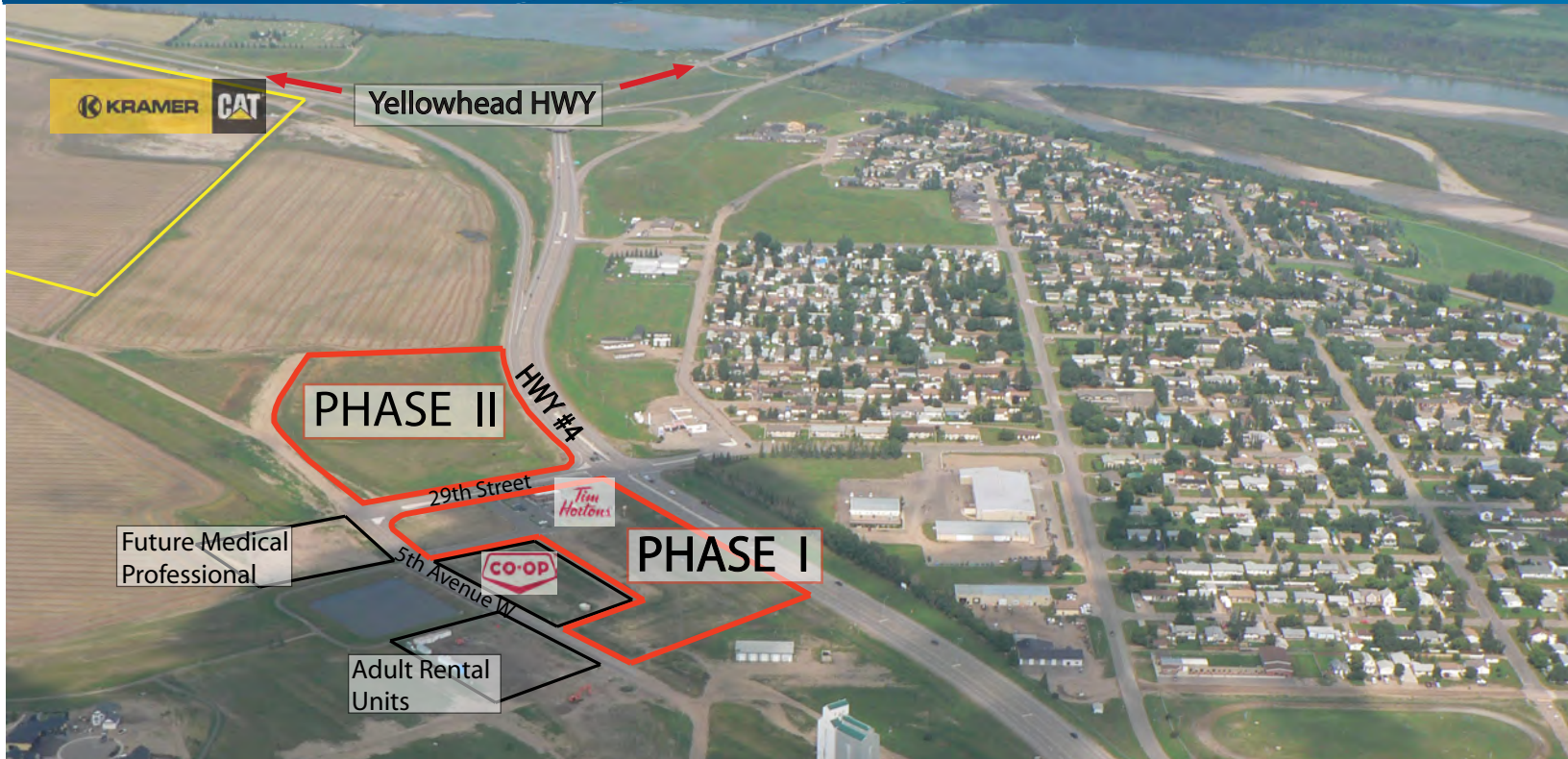


FOR LEASE > RETAIL



Battleford Crossing

HIGHWAY 4 AND 29TH STREET, BATTLEFORD SK S0M 0E0



Location

- > Located on the high-traffic corner of Highway 4 and 29th Street in Battleford, SK
- > Excellent exposure on Highway 4, the main highway leading to Saskatoon and Lloydminster
- > 8 Kilometers south of the City of North Battleford

Town Growth

- > Current population of Battleford is 4,525
- > 10.3% population increase from 2011
- > Population of Battleford and the surrounding area including the City of North Battleford was 19,200 (2011)

10,000 SF Building

4.8-acre Site - Phase I

9.94-acre Site - Phase II

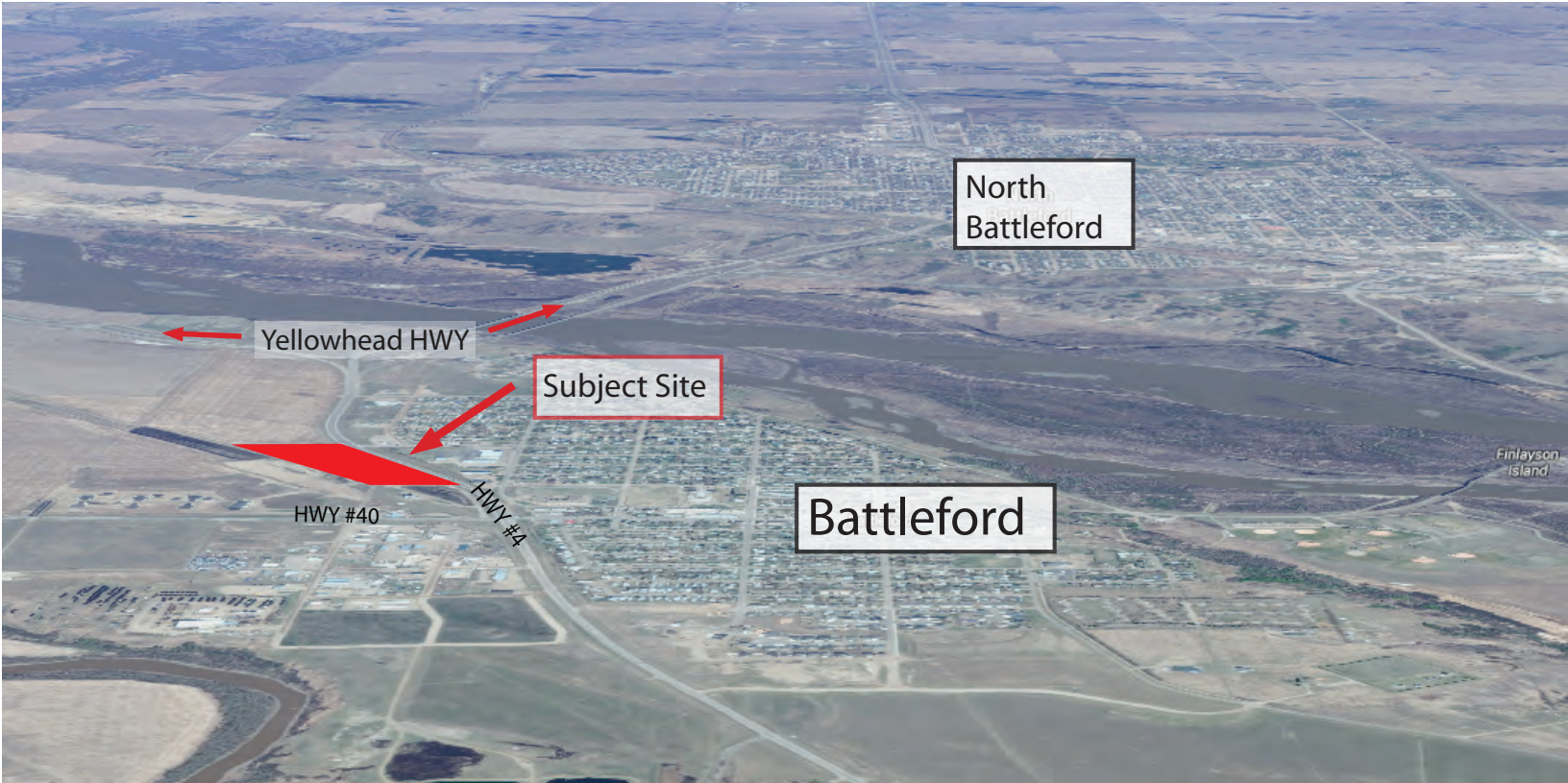
C2 Highway Commercial Zoning

Parcels 202843223, 202843122

Possession Negotiable

Net Lease Rate TBD

COLLIERS INTERNATIONAL
+1 306 664 4433
728 Spadina Crescent East
Saskatoon, SK S7K 3H2
www.collierscanada.com/xxxx



Building Description

- › Brand new CRU
- › Ideal for:
 - › Retail
 - › Medical
 - › Restaurant
 - › Bank
 - › Grocery store

Site Description

- › Anchored by:
 - › Tim Horton's
 - › Future Co-op Gas Bar, Convenience Store and Carwash
 - › Future Medical Professional

Local Attractions

- › Fort Battleford National Historic Site
- › 27km from Table Mountain Regional Park, a ski and snowboard attraction
- › Allen Sapp Gallery - The Gonor Collection (North Battleford)

Contact Us



KEITH WEBB

Vice President | Salesperson

+1 306 222 0774

+1 306 664 1216

keith.webb@colliers.com



RYANN BRAATEN

Salesperson

+1 306 716 8233

+1 306 664 1226

ryann.braaten@colliers.com

COLLIERS INTERNATIONAL

+1 306 664 4433

728 Spadina Crescent East

Saskatoon, SK S7K 3H2

www.collierscanada.com/saskatoon